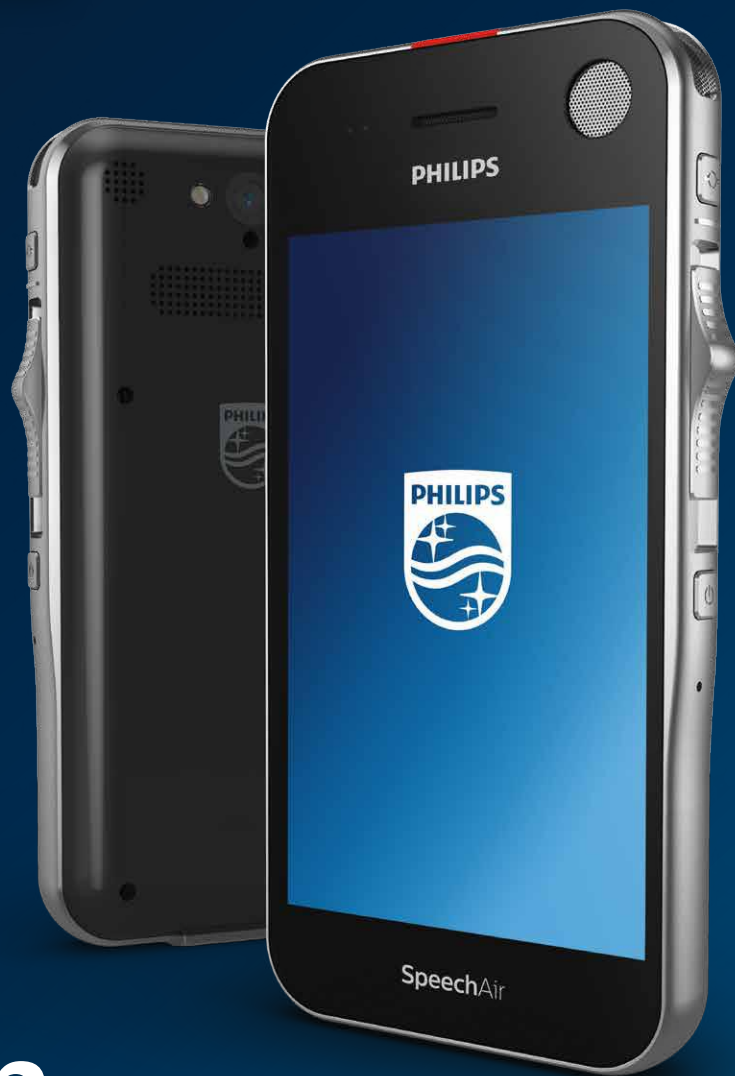


PHILIPS

SpeechAir

Smart voice recorder



**Touch
the future
of dictation**



SpeechAir

smart dictation on the go



Smart recording

with Wi-Fi and three professional microphones

The SpeechAir smart voice recorder saves you time and resources by allowing you to work more flexibly than ever before.

Whether you are a doctor or a lawyer, the Philips SpeechAir helps you make the most out of your valuable time. The integrated Wi-Fi function and three dedicated microphones let you record and share your files from anywhere and anytime. The Philips SpeechAir fits perfectly into your daily workflow. Record your voice from your office or on the road and securely send it off for transcription.



reddot award 2016
winner



asimpleswitch.com

Highlights



Ultimate recording quality

Crystal-clear recordings

Three professional microphones deliver ultimate sound quality in any recording situation. The 360° microphone is ideal for recording dictations and meetings. For noisy environments, such as when dictating on a train, in a shared office or hospital corridor, the directional microphone is best suited. It filters out background noise and records your voice perfectly for excellent playback as well as speech recognition results. You can even record clear VoIP calls with a third, dedicated microphone.

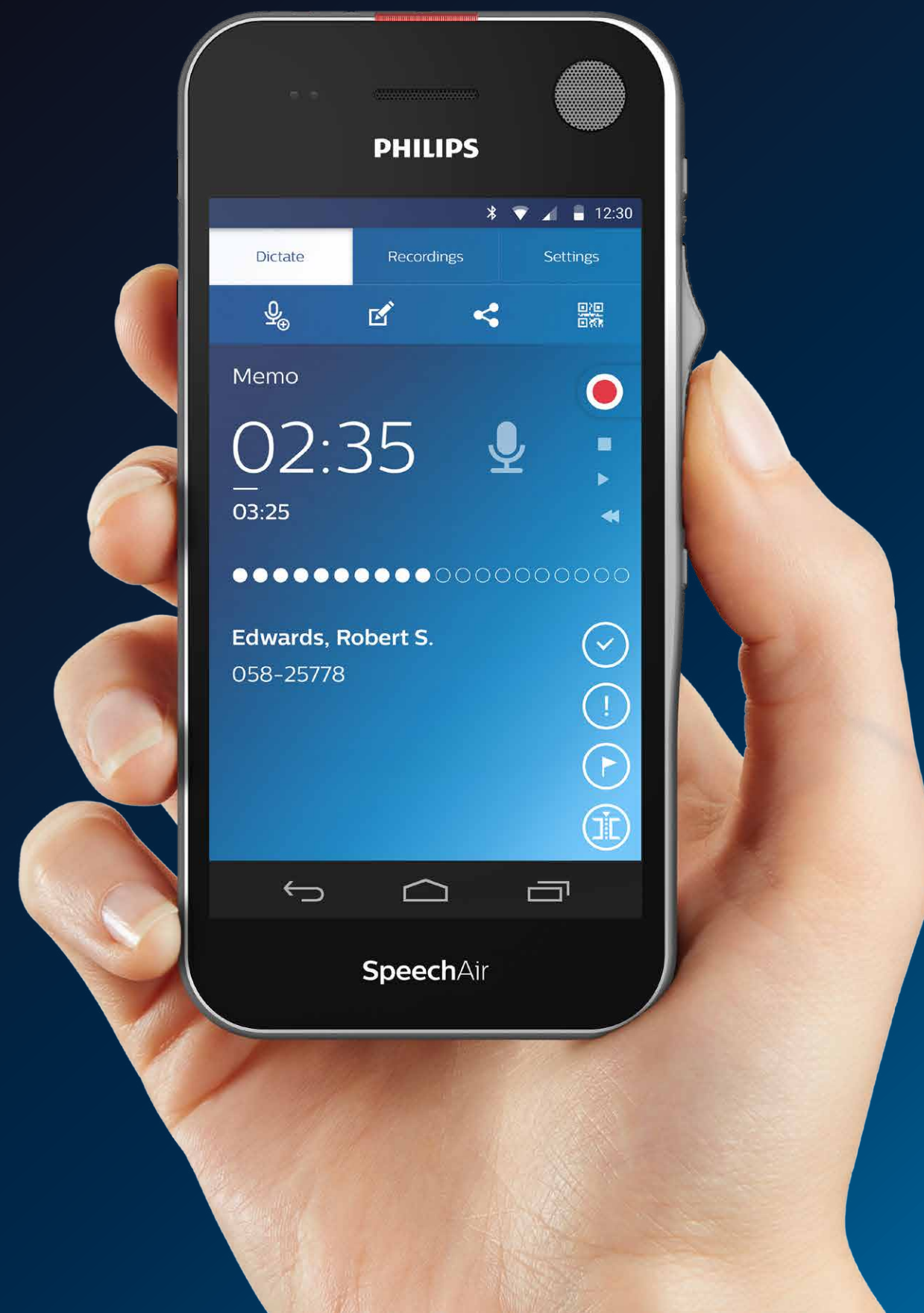


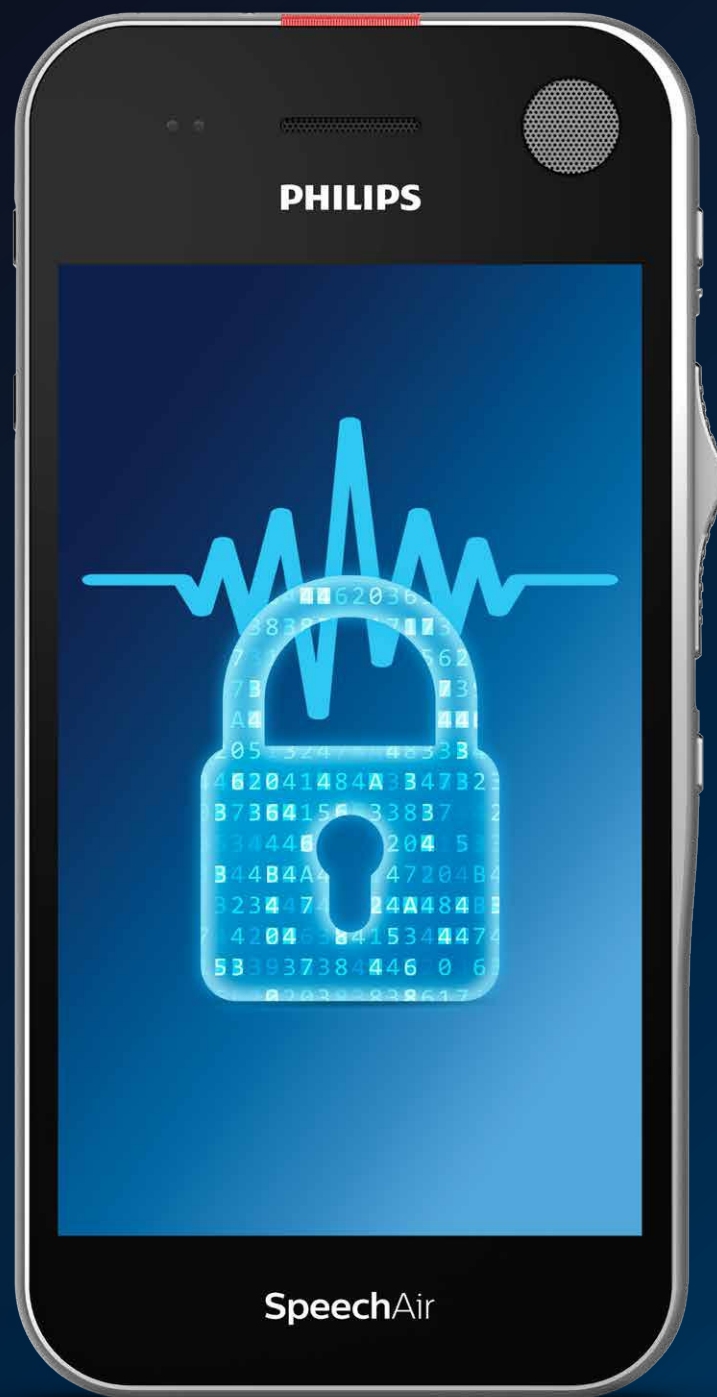


Wear-free slide switch

Outstanding ergonomics for prolonged use

The ergonomic and wear-free slide switch is designed for efficient single-handed operation without having to look down at the device. It allows for quick and easy file operation (play, pause, stop, fast forward, fast rewind). A customizable function key above the slider gives quick access to the app.





Maximum file security

Protect your recordings with up to triple encryption

Patient confidentiality is a high priority in every hospital and medical practice. In the legal sector safeguarding client information is also paramount. This is why SpeechAir recordings are encrypted in real time using the Advanced Encryption Standard (AES) with a key length of 256 bits. The AES has been approved for the most highly classified government information. A PIN code protects the device itself against unauthorized use. Features such as the camera can be locked and Wi-Fi networks restricted for employees.

Always stay connected

Wi-Fi, LAN, USB and Bluetooth

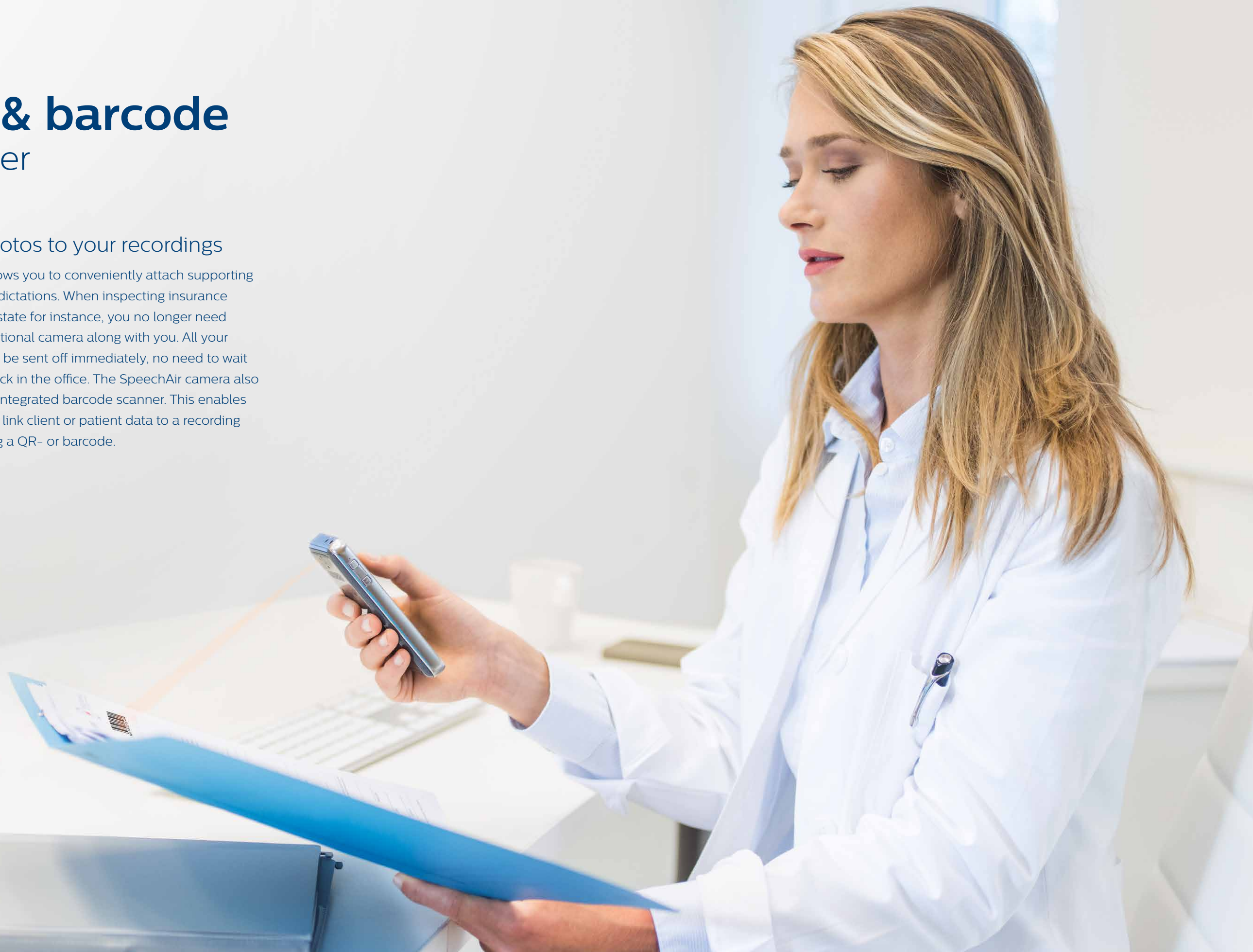
Save time by transferring your finished recordings wirelessly to your transcription staff and directly accessing your HIS. No need to wait until you are back in your office to transfer your recordings. Client or patient lists can easily be played onto the device, so dictations can always be assigned to the correct file or patient.

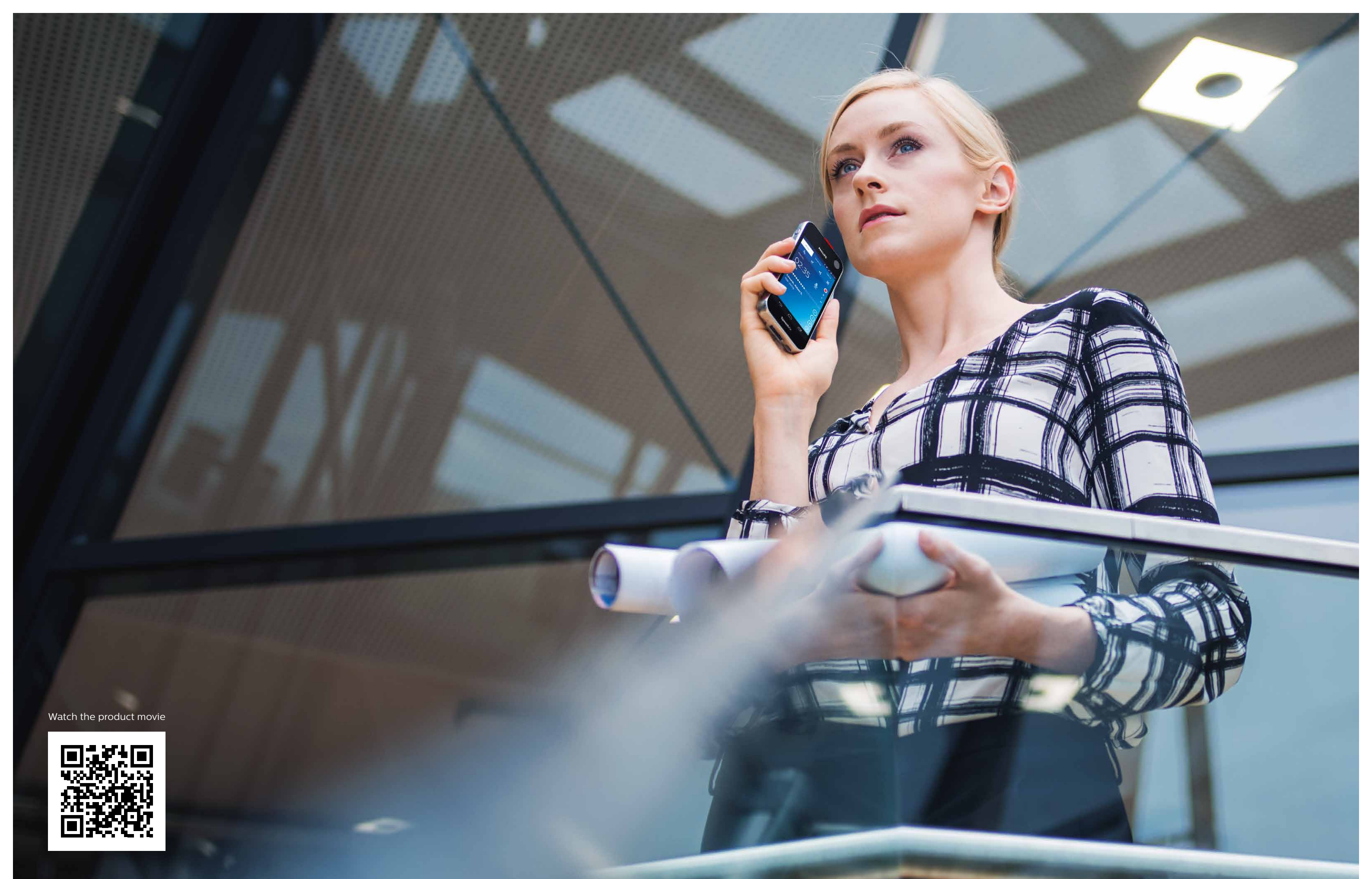


Camera & barcode scanner

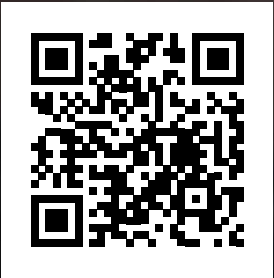
Attach photos to your recordings

The camera allows you to conveniently attach supporting photos to your dictations. When inspecting insurance claims or real estate for instance, you no longer need to carry an additional camera along with you. All your documents can be sent off immediately, no need to wait until you are back in the office. The SpeechAir camera also comes with an integrated barcode scanner. This enables you to instantly link client or patient data to a recording just by scanning a QR- or barcode.





Watch the product movie



Perfectly protected device

Gorilla glass and anti-microbial housing

Gorilla glass makes the device scratch and shock resistant. The housing is made of antimicrobial synthetics. These materials work against bacteria and various microorganisms to ensure hygienic working. The device is shockproof according to US military standard 516.6.



Docking station

Instant file transfer and quick charging

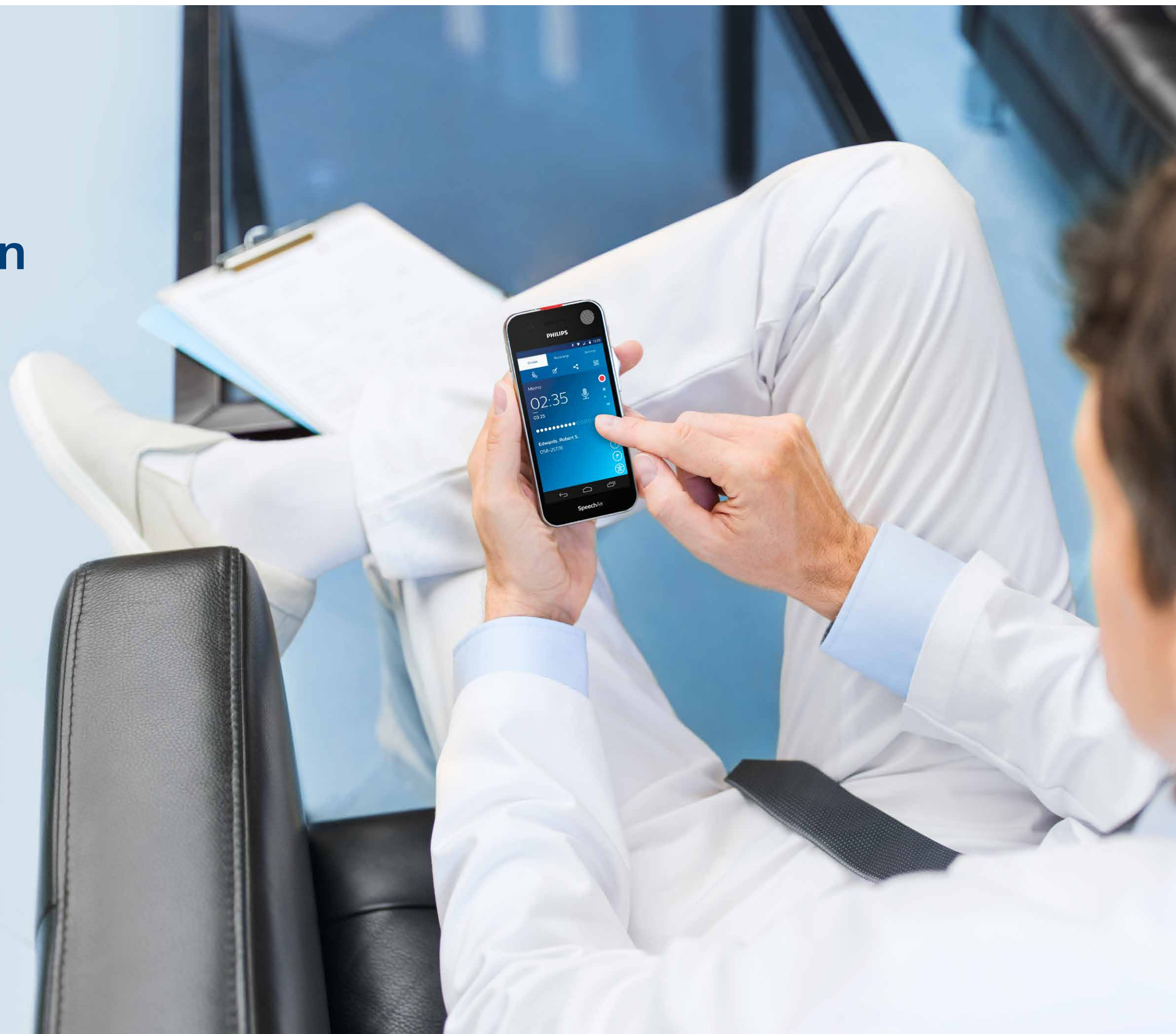
The included superior docking station automatically transfers all your recordings to your computer and quickly re-charges your device. The LAN connection allows you to transfer your files directly from the station without having to use a computer. The dock comes with a Kensington lock. This antitheft system guarantees a peace of mind when leaving the dock unattended in an office or operating room.



Philips dictation recorder app

Professional dictation features for increased efficiency

The integrated recorder app comes with professional dictation features such as editing modes, priority and EOL flag, enhanced data and dictation list as well as sending options (to network folder, Philips SpeechLive services or email recipients).



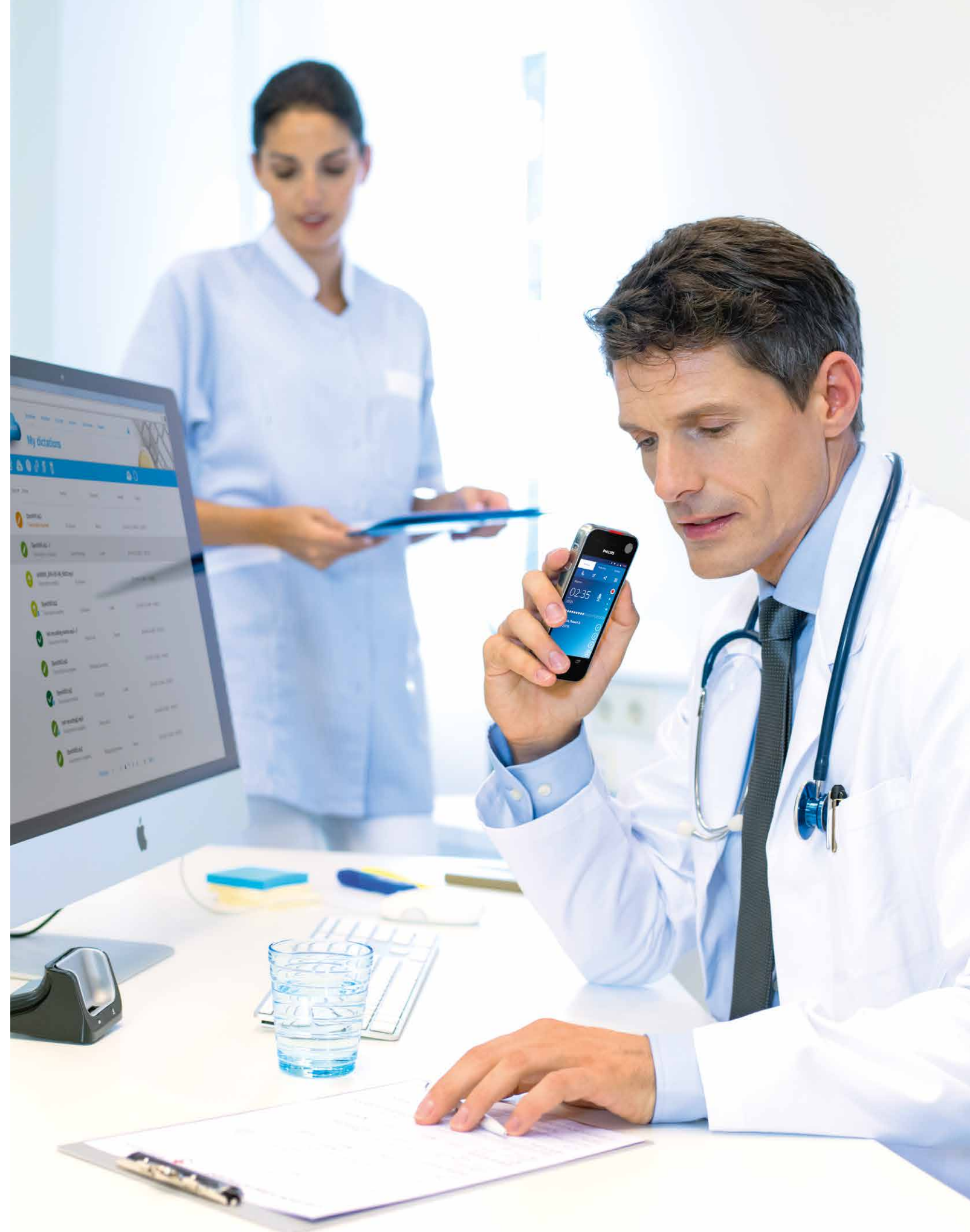
How to integrate SpeechAir into your solution

Philips SpeechAir smart voice recorder offers various connection options for configuration and data transfer.



Configure SpeechAir and Philips dictation recorder app manually or by using the Philips remote device manager. To setup the device with your own software you can use the SpeechAir hardware software development kit (SDK).

Send your dictations or other files from your own app to your workflow software by using the SpeechAir app SDK. You can also use the Philips dictation recorder app to send your recordings to a dictation workflow software.



Specifications

Device

Slide switch type: International slide switch (record/stop/play/rewind)
CPU: Dual Core Cortex-A9 1.6 GHz
RAM: 1 GB DDR3
Internal memory: 16 GB (12 GB available)
Operating system: Android 4.4.2
Color: dark grey pearl metallic and chrome frame
Sensors: light sensor, motion sensor, optical proximity sensor
Vibration module
Antimicrobial surface
Customizable function button

Dimensions

Product dimensions (W × D × H):
62 × 127 × 15 mm / 2.4 × 5.0 × 0.6 inches
Weight: 116 g / 4.1 oz

Connectivity

Headphones: 3.5 mm / 1.4 inches
Microphone: 3.5 mm / 1.4 inches
USB: micro USB 2.0
Wi-Fi: IEEE 802.11 a/b/g/n
Bluetooth: 4.0
Docking station connector

Display

Type: IPS with 16 million colors
Screen type: scratch resistant Gorilla glass touch screen
Diagonal screen size: 10.16 cm / 4 inches
Resolution: 480 × 800 pixels

Audio (supported by operating system)

Recording format: AMR, ACC
Playback format: MPEG (MP1, MP2, MP3), WMA, WAV, APE, OGG (OGG, OGA), FLAC, AAC (AAC, M4A)

Microphones

Directional microphone: for speech recognition
360° microphone: for meetings and dictation
MEMS microphone: for VoIP telephony

Philips dictation recorder app

Recording modes: DSS Pro (DS2/mono), PCM Voice (WAV/mono)
Bit rate: 28 kbit/s (DSS Pro), 256 kbit/s (PCM Voice)
Edit modes: insert, overwrite, append
Recording time: 1073 hours (DS2), 117 hours (WAV)
Sample rate: 16 kHz / 16 bit
Supported barcodes: Code 39, Code 93, Codabar, Code128, Code 25, Code 11, MSI-Plessey, EAN, UPC, QR code, Data Matrix

Speakers

Speaker type: built-in rectangular dynamic speaker
Dimensions front speaker: 6 × 12 mm / 0.2 × 0.5 inches
Dimensions rear speaker: 11 × 15 mm / 0.4 × 0.6 inches

Camera

Resolution: 5 Megapixels
Autofocus
Flash
Image formats (supported by operating system): JPG, JPEG, BMP, GIF, PNG
Video recording formats (supported by operating system): H.264 / AVC (MOV, 3GP) up to 1920 × 1088 pixels (30fps)
Video playback formats (supported by operating system): MPEG-1/2 (DAT, MPG, VOB, TS) up to 1920 × 1088 pixels (30 fps), MPEG4 (AVI, MKV, MP4, MOV, 3GP) up to 1920 × 1088 pixels (30 fps), DIVX (AVI, MKV, MP4, MOV, 3GP) up to 1920 × 1088 pixels (30 fps), Real Media (RM, RMVB) up to 1920 × 1088 pixels (30 fps), H.264 (AVI, MKV, MP4, MOV, 3GP, TS, FLV) up to 1920 × 1088 pixels (30 fps), MVC H.264 (AVI, MOV) up to 1920 × 1088 pixels (60 fps), VP8 (WEBM) up to 1920 × 1088 pixels (30 fps), VC-1 (WMV, ASF, TS, MKV, AVI) up to 1920 × 1088 pixels (30 fps), H.263 (3GP, MOV, MP4) up to 704 × 576 pixels (30 fps), Sorensen Spark (FLV) up to 1920 × 1088 pixels (30 fps), ON2 VP6 (AVI, FLV) up to 1920 × 1088 pixels (30 fps), JPEG (AVI, MOV) up to 1920 × 1088 pixels (30 fps)

Power

Battery type: built-in rechargeable Li-ion battery
Battery capacity: 2700 mAh
Battery lifetime: up to 12 hours of recording (DSS QP mode)
Standby time: up to 97 hours
Charging time (full charge): approx. 3 hours

Docking station

Product dimensions (W × D × H):
82 × 77 × 56 mm / 3.2 × 3.0 × 2.2 inches
Weight: 264 g / 9.3 oz
LAN connection
Kensington lock
Removable magnetic inlay for use with case

Green specifications

Compliant to 2011/65/EU (RoHS)

Operation conditions

Temperature: 5° – 45° C / 41° – 113° F
Humidity: 10 % – 90 %, noncondensing

Security

Real-time file encryption
Encryption standard (Philips dictation recorder app): Advanced Encryption Standard (AES) 256 bits
Device lock with PIN code or password
Configurable security settings with Software Development Kit (SDK) or configuration software
Lockable settings

System requirements for SpeechExec workflow software

Processor: Intel Dual-Core, 1.0 GHz or equivalent processor
RAM memory: 1 GB (2 GB recommended)
Hard disk space: 100 MB for SpeechExec software, 1 GB (32 bit)/2 GB (64 bit) for Microsoft .NET Framework
Operating system: Windows 10/8/7 (32/64 bit)
Free USB port
Graphics card: DirectX-compliant graphics card with hardware acceleration recommended
Windows Media Player must be installed

Your SpeechAir comes with



- ✓ Docking station
- ✓ In-ear earphones
- ✓ Data USB Cable
- ✓ Power USB Cable
- ✓ Quick start guide
- ✓ Power supply with international powerplugs
- ✓ SpeechExec Pro Dictate dictation workflow software (PSP1200)

Protect your investment

with the extra shock resistant case

The antimicrobial SpeechAir case has been developed to ensure maximum protection for your voice recorder, making it perfectly suitable for every working environment. The clip allows you to keep your recorder within reach at all times. Enjoy full protection and mobility.*



Convenient clip

Use the clip on the case to attach the device to a shirt or belt and have your voice recorder within reach immediately.

*The SpeechAir case (ACC1120) is an optional accessory.

Perfect fit into docking station

Even with the protective case the SpeechAir voice recorder fits perfectly into the docking station, allowing you to automatically transfer all your recordings and quickly re-charge your device.



Access to ports

The case still enables full access to the slide switch, device buttons, microphone and speaker. Easily connect an external microphone or a headset without taking the recorder out of the case.



Extra shock resistance

The case ensures extra shock resistance and defends your recorder against accidental drops, bumps and scratches.



More optional accessories & additional services

Professional transcription set LFH7277

The transcription set is a digital document creation solution specifically designed to make transcription easy and intuitive. The ergonomic accessories and the innovative SpeechExec Pro workflow software let you manage your jobs easily.



Telephone pickup microphone LFH9162

The Telephone Pickup Microphone allows telephone conversations to be recorded easily. Just plug it into your voice recorder and put the earpiece into your ear. The Telephone Pickup Microphone captures both sides of the conversation.



Software development kit (SDK)

The software development kit (SDK) allows you to customize your existing app to use the different microphones, speakers, slide switch, function key, microphone sensitivity and LED.



Hardware SDK

The Hardware SDK allows you to integrate your device into your own workflow solution, for example connect your SpeechAir to your hospital information system (HIS) to access patient data directly. Remotely configure the device in real time and lock the settings for advanced security.



Philips Remote Device Manager LFH7470

Optional remote administration using Philips Remote Device Management software* allows IT administration to manage, configure and update dictation hardware centrally, saving valuable time and resources.



SpeechExec dictation workflow solution LFH4400/LFH7330

Our solutions support every dictation scenario. This is the key to letting you work the way you want – and to providing individual solutions to the diverse requirements that are typical in enterprise-wide workflows. Visit www.philips.com/dictation for more information on these products.



SpeechLive: Cloud-based dictation workflow solution PCL1100

Philips SpeechLive takes the dictation workflow to the cloud – all of its great benefits. Record your dictations – anywhere, at any time and benefit from maximum security and reliability. Conveniently receive written documents in no time with the first complete Philips speech-to-text workflow solution. SpeechLive offers a professional transcription service, as well as speech recognition. www.speechlive.com



*Available from Q4 2016

